

# Effect of low-dose versus higher-dose antenatal iron supplementation on child health outcomes at 36 months of age in Viet Nam: longitudinal follow-up of a cluster randomised controlled trial

Sarah Hanieh,<sup>1</sup> Tran T Ha,<sup>2</sup> Julie A Simpson,<sup>3</sup> Sabine Braat,<sup>3</sup> Tran T Thuy,<sup>2</sup> Thach D Tran,<sup>2,4</sup> Janet King,<sup>5</sup> Tran Tuan,<sup>2</sup> Jane Fisher,<sup>4</sup> Beverley-Ann Biggs<sup>1,6</sup>

**To cite:** Hanieh S, Ha TT, Simpson JA, *et al.* Effect of low-dose versus higher-dose antenatal iron supplementation on child health outcomes at 36 months of age in Viet Nam: longitudinal follow-up of a cluster randomised controlled trial. *BMJ Glob Health* 2017;**2**:e000368. doi:10.1136/bmjgh-2017-000368

Received 11 April 2017  
Revised 9 June 2017  
Accepted 17 June 2017

## ABSTRACT

**Introduction** Intermittent iron-folic acid supplementation (IFA) is currently recommended for pregnant women in populations where anaemia prevalence among pregnant women is <20% or if daily iron is not acceptable. The effect of providing lower doses of antenatal elemental iron through intermittent regimes on longer-term health outcomes in childhood is unclear.

**Methods** A prospective cohort study conducted between May 2012 and May 2014 in Viet Nam among children of 36 months of age, born to women previously enrolled in a cluster randomised controlled trial of antenatal micronutrient supplementation (daily IFA (60 mg elemental iron) vs twice-weekly IFA (60 mg elemental iron) vs twice-weekly multiple micronutrient (MMN) supplementation (60 mg elemental iron)). Primary outcomes were height-for-age z-scores (HAZ), according to WHO growth standards and cognitive composite scores (Bayley Scales of Infant and Toddler Development, third edition) at 36 months of age.

**Results** A total of 1017 children born to mothers enrolled in the cluster randomised trial were assessed at 36 months of age. Adjusted mean differences (MDs) in HAZ were -0.14 (95% CI -0.28 to -0.01) and -0.15 (95% CI -0.29 to -0.01) in children born to mothers who received twice-weekly IFA or MMN compared with those who received daily IFA. Children born to mothers who received twice-weekly MMN had lower composite motor scores compared with those who received daily IFA (MD -2.07, 95% CI -4.11 to -0.03). There were no differences in composite cognitive scores in the twice-weekly compared with daily regimens.

**Conclusions** Low-dose antenatal IFA supplementation (120 mg elemental iron per week) resulted in lower HAZ and motor composite scores in children compared with higher-dose antenatal IFA supplementation (420 mg elemental iron per week). This highlights the importance of adequate iron stores during pregnancy and the need for careful monitoring when lower-dose antenatal iron regimens are used.

**Trial registration number** Australia New Zealand Clinical Trials Registry: 12610000944033.

## INTRODUCTION

Micronutrients play an important role in the health of mothers and children in resource-poor settings where nutritional deficiencies are prevalent.<sup>1-3</sup> WHO currently recommends the use of intermittent iron-folic acid (IFA) for pregnant women in populations where anaemia prevalence among pregnant women is <20% or if daily iron is not acceptable due to side effects.<sup>4,5</sup> Although the effect of intermittent IFA on maternal and neonatal outcomes has been previously described,<sup>6,7</sup> the impact on longer-term health outcomes in childhood has not yet been reported.

We previously conducted a cluster randomised controlled trial (RCT) in which pregnant women received either daily IFA supplementation or twice-weekly iron or multiple micronutrient (MMN) supplementation.<sup>8</sup> This was the largest RCT in a developing country setting to investigate the use of intermittent antenatal micronutrient regimens on infant outcomes past the neonatal period, and the first to compare daily IFA with intermittent MMN supplementation. We found no difference in birth weight between infants born to mothers in the twice-weekly IFA (mean difference (MD) 28g, 95% CI -22 to 78) and MMN groups (MD -36.8g, 95% CI -82 to 8.2) compared with those in the daily IFA group; or height-for-age z-scores (HAZ) at 6 months of age between infants born to mothers in the twice-weekly IFA (MD-0.14, 95% CI -0.29 to 0.02) and MMN groups (MD -0.04, 95% CI -0.20 to 0.11) compared with those in the daily IFA group. However, infants of mothers who received twice-weekly IFA had composite cognitive scores that were 1.89 scores higher at 6 months of age compared with those who



CrossMark

For numbered affiliations see end of article.

### Correspondence to

Sarah Hanieh;  
shanieh@unimelb.edu.au

## Key questions

**What is already known about this topic?**

- ▶ Pregnant women have increased nutrient needs, and deficiencies in essential nutrients during this period may result in adverse health outcomes for the mother and child.
- ▶ Intermittent iron-folic acid supplementation is currently recommended for pregnant women in populations where anaemia prevalence among pregnant women is <20% or if daily iron is not acceptable.
- ▶ Lower cognitive scores have been previously described in infants born to women who received twice-weekly antenatal iron-folic acid supplements compared with those who received daily iron-folic acid supplements. However, there is minimal data on the impact of intermittent iron-folic acid supplementation on longer-term health outcomes in childhood.

**What are the new findings?**

- ▶ Children born to women who received twice-weekly iron-folic acid or multiple micronutrient supplementation during pregnancy (120 mg elemental iron per week) during pregnancy had lower height and height-for-age z-scores compared with those who received daily antenatal iron supplementation (420 mg elemental iron per week).
- ▶ Motor composite scores at 36 months of age were lower in children born to women who received antenatal multiple micronutrient supplementation compared with those who received antenatal daily iron-folic acid supplementation. No differences in composite cognitive scores of children born to mothers who received twice-weekly iron-folic acid compared with daily iron-folic acid supplementation was observed.

**Recommendations for policy**

- ▶ Continued efforts are required to ensure pregnant women in low-income settings have adequate iron stores during pregnancy.
- ▶ A better understanding of the long-term clinical outcomes in children born to mothers receiving low doses of iron during the pregnancy period is required

received daily IFA (95% CI 0.23 to 3.56) when measured using the Bayley Scales for Infant and Toddler Development, third edition (BSID III).

Children born in the original RCT have now been followed up to 36 months of age, allowing investigation of whether antenatal IFA or MMN given twice weekly during pregnancy has a differential effect on child growth and developmental outcomes compared with daily IFA. Based on our findings at 6 months of age, we hypothesised that there would be no difference in HAZ in the children at 36 months of age, and that the minimal differences in infant cognitive scores between the daily and intermittent IFA groups would not persist. We also examined haemoglobin (Hb) concentration, and serum ferritin, folate and vitamin B12 concentrations at 36 months of age.

**METHODS****Study design, setting and participants**

This prospective cohort study was conducted between May 2012 and May 2014, in Ha Nam province in rural North

Viet Nam. Viet Nam has experienced rapid social and economic development over the last 10 years; however, disparities in health and nutrition between the rich and poor have widened, with many children in rural areas still experiencing high rates of anaemia and stunting.<sup>9</sup>

The RCT has been previously described.<sup>8</sup> Briefly, 1258 women from 104 communes in Ha Nam province were enrolled. Participants received supplements from enrolment (median 12 weeks gestation) until 3 months post partum, and were seen at enrolment, 32 weeks gestation, delivery, 6 weeks and 6 months post partum. Allocation was based on communes (clusters). The trial had three intervention groups: (1) one tablet of IFA taken daily (60 mg elemental iron (ferrous sulfate) plus 0.4 mg folic acid per tablet, administered as seven tablets/week); (2) one capsule of IFA taken twice a week (60 mg elemental iron (ferrous sulfate) plus 1.5 mg folic acid per capsule; administered as two capsules/week); or (3) one capsule of MMNs taken twice a week (60 mg elemental iron (ferrous sulfate) plus 1.5 mg folic acid plus a variation of the dose of micronutrients in the United Nations Multiple Micronutrient Preparation (UNIMAPP) supplement<sup>10</sup>; administered as two capsules/week). All supplements were manufactured by the local Nam Ha Pharmaceutical company (Nam Dinh, Viet Nam) (WHO Good Manufacturing Practice certified). A total of 1049 women and infants completed the trial and were seen by the research team at 6 months post partum (when infants were 6 months of age). All children born to mothers enrolled in the RCT were eligible to take part in the follow-up study. Children received no intervention during the first 36 months of life. Assessments were carried out at the commune health station at 6, 12, 18, 24, 30 and 36 (final survey) months of age. The investigators, field staff and participants were blinded to the codes of the intermittent supplement groups throughout the study and during data analysis. Laboratory staff were unaware of the intervention groups. It was not possible to blind the field team to the daily supplementation arm, but participants were not informed about the dosing frequency of the intervention being given in other communes. An independent team undertook the BSID III assessments and were blinded to the intervention arms.

**Procedures**

Children born in the RCT were followed up until 36 months of age by the same local non-governmental organisation (RTCCD) which conducted the RCT. Research staff underwent repeat training in anthropometric measurements and development assessment with BSID III.

**Maternal information**

Maternal age, height, weight, education, occupation, and gravidity were collected in the RCT at enrolment.

**Socio-demographic information**

A questionnaire was administered to carers at the time of the 12-month survey (when children were formally

enrolled in the cohort study), covering socioeconomic status (eg, type of toilet, main water and energy source).

### Anthropometric measurements

Anthropometric measures (height and weight) were recorded at 6, 12, 18, 24, 30 and 36 months of age. These measurements were made in triplicate, with a second observer checking all measurements for validity. The median measurement was used for analysis. Standing height was measured using a portable Shorr Board (Shorr Productions) with the child positioned with the heels touching the base of the stadiometer, knees and feet extended, and their head and back touching the stadiometer (footwear was removed). Weight was measured using electronic Seca 890 scales, with precision to the nearest 100 g. Growth (height for age, weight for age and weight for height) was evaluated using the 2006 WHO Child Growth Standards.<sup>11</sup> Anthropometric z-scores were calculated using WHO Anthro (V.3.2.2, January 2011).<sup>12</sup> Being stunted, wasted or underweight was defined as having a z-score <2 Standard Deviations [SD] below WHO growth standards on height for age, weight for height or weight for age, respectively.

### Developmental outcomes

Developmental assessments for cognitive, language and motor domains were conducted at 6 and 36 months of age using BSID III. Local community-based psychologists conducted the assessment, following training from a local Vietnamese expert. Mild cognitive delay was defined as a cognitive composite score of 1–2 SDs below the mean, moderate delay as >2–3 SDs below the mean and severe delay as >3 SDs below the mean.

### Laboratory outcomes

Children had blood collected at 6 and 36 months of age by local phlebotomists from the Provincial Paediatric hospital. Hb (g/dL) was measured using a portable photometer (HemoCue Hemoglobin Systems), and 1 mL of venous blood was collected for ferritin and vitamin B12 concentrations. Samples were frozen at –20°C and transported to the Alfred Hospital, Melbourne, for testing. Serum B12 (pmol/L) and ferritin (µg/L) were analysed using a chemiluminescent microparticle assay (Architect ci16200; Abbott Diagnostics). Anaemia in children was defined as Hb <11.0 g/dL, iron deficiency as serum ferritin <12 µg/L, iron deficiency anaemia as Hb <11.0 g/dL and ferritin <12 µg/L, and B12 deficiency as serum B12 <150 pmol/L. No adjustment was made for inflammation or infection using C reactive protein.

### Statistical analysis

The sample size was a result of the number of women in the original RCT, which was powered at 80% to detect an effect size of a difference in the primary outcome of mean birth weight of 100 g, Hb of 6 g/dL and HAZ of 0.3 at a two-sided significance level of 5%. Data were analysed according to the group to which women were randomised, with those lost to follow-up excluded, that

is, a complete-case analysis. In [table 1](#), the significance of the difference in proportions was tested using the  $\chi^2$  test and in means using the Student's t-test. For continuous outcomes, linear mixed-effects models were used for repeated measures at 6, 12, 18, 24, 30 and 36 months for HAZ; and at 6 and 36 months for developmental composite scores, Hb, ferritin, folate and B12 concentrations, incorporating a random effect for child, both unadjusted (treatment only) and adjusted for maternal age (years), gravidity (0, 1–2, ≥3), education (categories primary school, secondary school, university/college), body mass index (BMI), maternal pathology at 32 weeks gestation (for child laboratory outcomes) and clustering at the commune level. For binary outcomes assessed at 36 months of age, logistic regression was used, and unadjusted and adjusted odds ratios (ORs) are presented. Estimates (95% CIs and associated p value) of the effect (either difference in means or OR) between the daily (reference) and weekly trial groups at 36 months were extracted. No imputation of the missing data was performed for those lost to follow-up at the time of the 36-month survey. The linear mixed-effects model assumed missing data to be at most missing at random, using a likelihood-based approach to use the available data, while the logistic regression model assumed missing completely at random, deleting infants with no data at the 36-month assessment. The intraclass correlation coefficient for the HAZ at 36 months and cognitive development scores was 0.03 (95% CI 0.00 to 0.06) and 0.02 (95% CI 0.00 to 0.05), respectively. A stratified analysis to determine whether there was a different treatment effect for children of undernourished mothers at enrolment (BMI <18.5 kg/m<sup>2</sup>) versus those with BMI ≥18.5 on child anthropometric and developmental outcomes was explored. Associations between maternal ferritin concentration at 32 weeks gestation and child height, height for age and stunting outcomes at 36 months of age were explored using linear regression with estimates (95% CIs) of the coefficient. Since ferritin and B12 concentrations were positively skewed, they were log base 2 transformed before analysis. All statistical analyses were performed using Stata, V.14. (StataCorp. 2015. Stata Statistical Software: Release 14. College Station, TX: StataCorp LP.)

### RESULTS

Anthropometric and developmental outcomes were measured in 1017 children at 36 months of age. The trial profile is presented in [figure 1](#). Retention rates (percentage of children seen at 36 months of age from live births) were 85.9% in the daily IFA group, 88.3% in the twice-weekly IFA group and 86.3% in the twice-weekly MMN group for the primary outcome of HAZ. Mean age at follow-up was 35.7 months, and this was similar in all groups. [Table 1](#) compares maternal and household characteristics in the three groups at the

**Table 1** Maternal, household and child characteristics corresponding to children retained at 36 months (n=1017) and of those lost to follow-up (n=154)

	Daily IFA* (n=336)	Twice-weekly IFA* (n=353)	Twice-weekly MMN* (n=328)	Lost to follow-up* (n=154)
<i>Maternal characteristics</i>				
Height (cm)	154.3 [4.8]	153.9 [4.7]	153.2 [4.8]	152.9 [4.8]
Body mass index (kg/m <sup>2</sup> )	19.9 [1.95]	19.8 [1.9]	19.9 [2.0]	19.8 [2.2]
Low (<18.5 kg/m <sup>2</sup> )	77 (24.2)	87 (25.9)	83 (26.9)	28 (31.1)
Normal (18.5–25 kg/m <sup>2</sup> )	239 (75.2)	247 (73.5)	217 (70.2)	60 (66.7)
High (>25 kg/m <sup>2</sup> )	2 (0.6)	2 (0.6)	9 (2.9)	2 (2.2)
Age (years)				
<20	38 (11.9)	20 (5.9)	22 (7.1)	7 (7.8)
20–29	235 (73.7)	245 (72.9)	229 (74.1)	67 (74.4)
≥30	46 (14.4)	71 (21.1)	58 (18.8)	16 (17.8)
Education†				
Primary school	53 (15.5)	42 (11.9)	60 (18.1)	27 (17.4)
Secondary school	169 (49.3)	197 (55.8)	166 (50.0)	62 (40.0)
High school	88 (25.7)	75 (21.3)	85 (25.6)	43 (27.7)
University/college	33 (9.6)	39 (11.1)	21 (6.3)	23 (14.8)
Occupation†				
Farmer	140 (40.8)	151 (42.8)	143 (43.1)	43 (27.7)
Factory worker	57 (16.6)	52 (14.7)	41 (12.4)	25 (16.1)
Trader	58 (16.9)	68 (19.3)	63 (18.9)	36 (23.2)
Government official	31 (9.0)	44 (12.5)	25 (7.5)	26 (16.7)
Clerk	17 (5.0)	10 (2.8)	13 (3.9)	5 (3.2)
Not in income-generating work	38 (11.1)	22 (6.2)	41 (12.4)	17 (10.9)
Other	2 (0.6)	6 (1.7)	6 (1.8)	3 (1.9)
Gravidity				
0	127 (37.0)	92 (26.1)	106 (32.0)	46 (29.9)
1–2	178 (51.9)	208 (58.9)	182 (55.0)	85 (55.2)
≥3	38 (11.1)	53 (15.0)	43 (13.0)	23 (14.9)
Nutritional status				
–At enrolment				
Haemoglobin (g/dL)	12.3 [1.4]	12.1 [1.1]	12.3 [1.2]	12.5 [1.2]
Ferritin (µg/L)	74.5 {47 to 125}	83 {54 to 129}	79 {49 to 124}	89 {49 to 134}
B12 (pmol/L)	398 {319 to 504}	395.5 {319 to 502}	411 {323 to 518}	414 {329 to 514}
Folate (nmol/L)	27.6 {21.0 to 35.4}	28.5 {21.4 to 34.5}	27.7 {21.3 to 33.1}	27.9 {20.9 to 33.5}
–At 32 weeks gestation				
Haemoglobin (g/dL)	12.5 [1.4]	12.4 [1.1]	12.3 [1.2]	12.2 [1.2]
Ferritin (µg/L)	35 {24.5 to 55}	27 {18 to 37}	22 {14 to 35}	25.5 {15 to 38.5}
B12 (pmol/L)	234 {186.5 to 282.5}	231.5 {188 to 285}	233 {190 to 290}	219.5 {175 to 263.5}
Folate (nmol/L)	29.9 {24.0 to 34.5}	29.3 {24.5 to 33.9}	25.5 {17.9 to 32.0}	25.6 {18.5 to 32.2}
<i>Household characteristics</i>				
Type of toilet				
None	2 (0.6)	2 (0.6)	12 (3.7)	2 (3.6)
Pit latrine	48 (14.5)	57 (16.2)	46 (14.2)	4 (7.1)
Compartment latrine	63 (19.0)	54 (15.4)	50 (15.4)	6 (10.7)

Continued

Table 1 Continued

	Daily IFA* (n=336)	Twice-weekly IFA* (n=353)	Twice-weekly MMN* (n=328)	Lost to follow-up* (n=154)
Flush toilet	216 (65.9)	238 (67.8)	216 (66.7)	44 (78.6)
<i>Child characteristics</i>				
Sex				
Male	165 (51.7)	184 (54.8)	159 (51.5)	42 (49.4)
Female	154 (48.3)	152 (45.2)	150 (48.5)	43 (50.6)
Birth weight (g)†	3156 [424]	3186 [355]	3137 [424]	3065 [495]
Preterm delivery†	35 (10.6)	39 (11.4)	41 (13.3)	26 (17.9)

\*Data are number (%), mean [SD] or median {25th to 75th centile}.  
IFA, iron-folic acid; MMN, multiple micronutrients.

12-month time point (when children were formally enrolled into the follow-up cohort study), and for 154 children who were lost to follow-up by 36 months of age. Secondary school was most often reported as the highest level of education and the majority of households used a flush toilet. Nearly 13% of children were delivered preterm. Women who were lost to follow-up were more likely to be university educated and working as government officials, and to have delivered a preterm infant with a lower birth weight.

### Growth outcomes

Anthropometric outcomes were available on 1017 children at 36 months of age. Table 2 presents anthropometric indices by maternal antenatal supplement group at 6, 12, 18, 24, 30 and 36 months of age. Analysis of child growth outcomes at 36 months is presented in table 3. The prevalence of stunting was 17% (173/1017), wasting 1% (10/1017) and underweight 6.1% (62/1017). Average length/HAZ decreased over time in each of the groups. Two analyses are presented: (1) unadjusted analysis comparing MD between the intermittent groups (120 mg elemental iron per week) compared with the daily arm (60 mg elemental iron per week); and (2) analysis adjusted for maternal age, parity and education, maternal BMI and clustering. Mean height was 91.5 cm (SD 3.5) in the daily IFA group, 90.9 cm (SD 3.2) in the twice-weekly IFA group and 90.9 cm (SD 3.5) in the twice-weekly MMN group. Children born to mothers who received twice-weekly IFA during pregnancy (MD -0.14, 95% CI -0.28 to -0.01) or twice-weekly MMN during pregnancy (MD -0.15, 95% CI -0.29 to -0.01) were found to have significantly lower HAZ than children born to mothers who received daily IFA. No difference in the odds of stunting or underweight was observed in children born to mothers who received daily IFA versus twice-weekly IFA or MMN. No difference in the treatment effects on growth outcomes was found when children were stratified according to whether mothers were undernourished at enrolment (BMI <18.5 kg/m<sup>2</sup>) or not (p=0.7 and 0.4 for user-defined contrast of twice-weekly

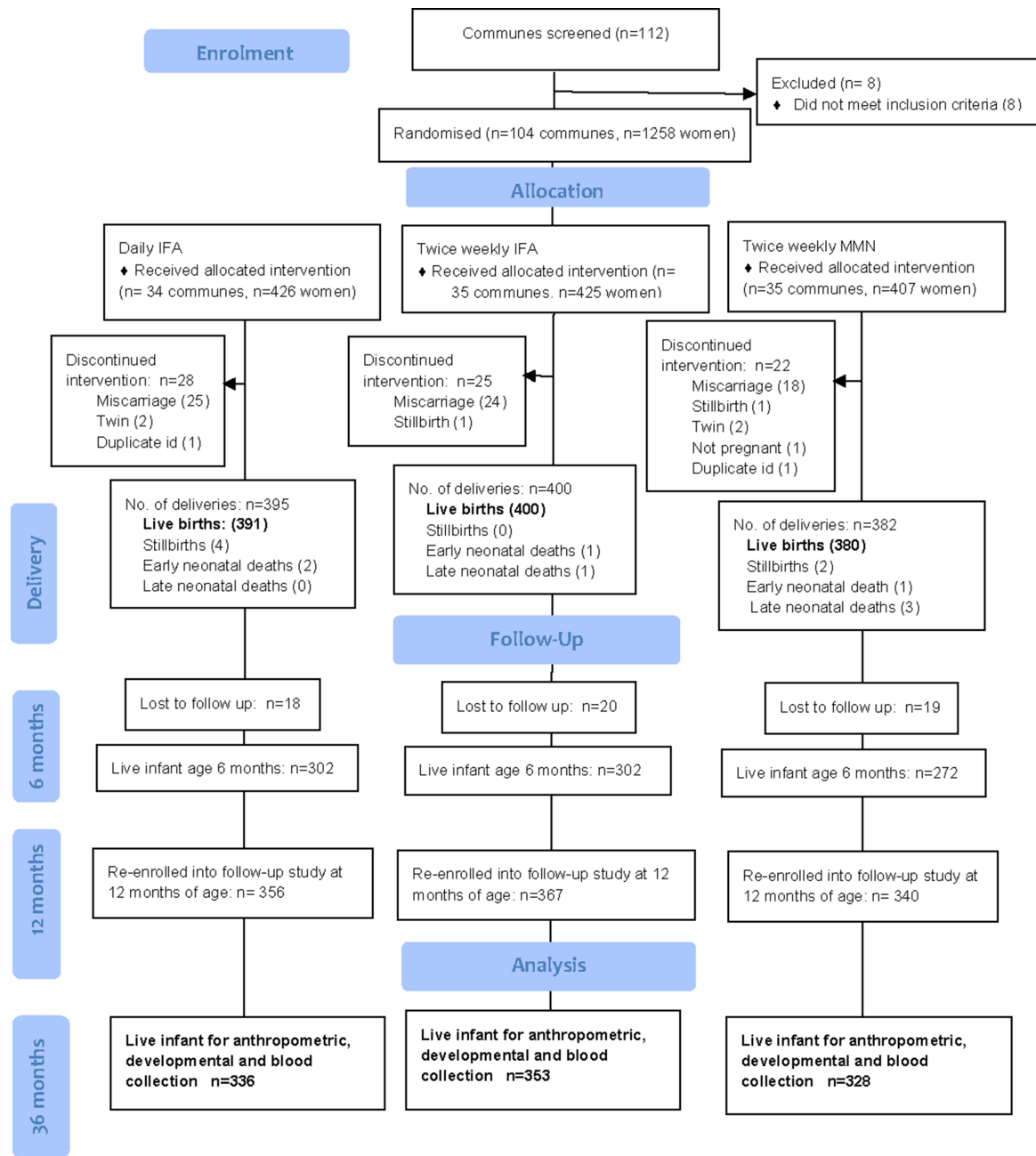
IFA and twice-weekly MMN vs daily IFA respectively). There was no association between maternal ferritin concentration at 32 weeks gestation and child HAZ at 36 months of age (figure 2).

### Development

Mean cognitive development scores at 36 months of age were 96.3 (SD 6.7) in the daily IFA arm, 96.2 (SD 4.8) in the twice-weekly IFA arm and 96.0 (SD 5.51) in the twice-weekly MMN arm. Mild cognitive delay was found in 23.8%, moderate delay in 0.2% and severe delay in 0.1% of children. There was no difference in the cognitive scores of children born to mothers who received twice-weekly IFA (MD -0.19, 95% CI -1.20 to 0.82) or twice-weekly MMN (MD -0.26, 95% CI -1.24 to 0.72) during pregnancy, compared with those whose mothers received daily IFA. Lower composite motor scores were seen in the children born to women who received twice-weekly MMN compared with those whose mothers received daily IFA (MD -2.07, 95% CI -4.11 to -0.03) (Table 4). None of the development domains provided evidence of a different treatment effect for children born to mothers who were undernourished at enrolment (BMI <18.5 kg/m<sup>2</sup>) compared with those who were not.

### Haemoglobin and micronutrient outcomes

Overall mean Hb at 36 months of age was 11.7 (SD 0.96) and 18.6% (180/966) of children were found to be anaemic. The unadjusted and adjusted analyses are shown in table 5. There was no difference in mean Hb or odds of anaemia in children born to women who received twice-weekly IFA or twice-weekly MMN supplements compared with those born to women who received daily IFA. Overall median ferritin concentration was 35 µg/L (25th to 75th percentile 21–54) and 4.4% (37/845) of children were iron deficient. No difference in ferritin concentration and iron deficiency status at 36 months of age was demonstrated between the weekly versus daily supplementation groups. Only 1% (9/838) children had iron deficiency anaemia. Overall median vitamin B12 concentration was 514 (25th to 75th percentile 400–673)



**Figure 1** Flow diagram. IFA, iron-folic acid; MMN, multiple micronutrients.

and no infants were vitamin B12 deficient. There was no difference in vitamin B12 concentration between children born to women who received the twice-weekly supplements compared with those born to women who received daily supplementation (table 5).

**DISCUSSION**

To our knowledge, this is the first RCT investigating the use of low-dose (120 mg per week) versus higher-dose (420 mg per week) antenatal iron supplementation regimens to determine clinical outcomes in children to 36 months of age. We found that children born to mothers who received intermittent iron supplementation during pregnancy (120 mg elemental iron per week) had

significantly lower height and HAZ than children born to mothers who received daily antenatal IFA (420 mg elemental iron per week). Furthermore, motor development scores were lower in children whose mothers received twice-weekly IFA or MMN during pregnancy compared with daily IFA. There were no differences in stunting, wasting, underweight, Hb or micronutrient concentrations between the different antenatal supplement groups.

The finding that antenatal IFA supplementation given daily has a beneficial effect on child growth at 36 months of age compared with twice-weekly supplementation may reflect the important role that maternal iron status plays in fetal growth,<sup>13</sup> in addition to potential epigenetic

**Table 2** Anthropometric indices at 6, 12, 18, 24, 30 and 36 months of age by maternal antenatal supplement group (n=1017)

	Children with data (n, %)	Daily IFA*	Twice-weekly IFA*	Twice-weekly MMN*
<b>6 months</b>				
Length-for-age z-score	1046 (89.3)	-0.52 [0.9]	-0.65 [0.9]	-0.56 [1.0]
Weight-for-age z-score	1049 (89.6)	-0.09 [1.0]	-0.12 [1.0]	-0.11 [3.9]
Weight-for-height z-score	1046 (89.3)	0.36 [1.0]	0.44 [1.02]	0.38 [1.02]
Wasting	1046 (89.3)	5 (1.4)	3 (0.8)	7 (2.1)
Underweight	1049 (89.6)	10 (2.9)	14 (3.9)	11 (3.3)
Stunted	1046 (89.3)	23 (6.6)	22 (6.1)	22 (6.6)
<b>12 months</b>				
Length-for-age z-score	1021 (87.2)	-0.69 [1.0]	-0.75 [0.9]	-0.77 [1.0]
Weight-for-age z-score	1021 (87.2)	-0.39 [1.0]	-0.51 [0.9]	-0.46 [1.0]
Weight-for-height z-score	1020 (87.1)	-0.11 [1.0]	-0.22 [0.9]	-0.13 [1.0]
Wasting	1020 (87.1)	7 (2.1)	8 (2.2)	5 (1.5)
Underweight	1021 (87.2)	17 (5.0)	19 (5.3)	20 (6.2)
Stunted	1021 (87.2)	29 (8.6)	31 (8.6)	34 (10.5)
<b>18 months</b>				
Length-for-age z-score	1032 (88.1)	-0.92 [1.1]	-1.05 [0.9]	-1.01 [1.0]
Weight-for-age z-score	1037 (88.6)	-0.43 [1.1]	-0.55 [0.9]	-0.51 [1.0]
Weight-for-height z-score	1032 (88.1)	0.01 [1.0]	-0.07 [0.9]	-0.03 [0.9]
Wasting	1032 (88.1)	5 (1.5)	4 (1.1)	3 (0.9)
Underweight	1037 (88.6)	21 (6.1)	15 (4.2)	21 (6.3)
Stunted	1032 (88.1)	51 (14.9)	58 (16.2)	50 (15.1)
<b>24 months</b>				
Length-for-age z-score	909 (77.6)	-0.98 [1.0]	-1.05 [0.91]	-1.05 [0.9]
Weight-for-age z-score	909 (77.6)	-0.62 [1.0]	-0.68 [0.89]	-0.64 [0.9]
Weight-for-height z-score	909 (77.6)	-0.18 [1.0]	-0.20 [0.87]	-0.14 [0.8]
Wasting	909 (77.6)	6 (1.9)	6 (1.9)	5 (1.7)
Underweight	909 (77.6)	25 (8.1)	18 (5.7)	20 (6.9)
Stunted	909 (77.6)	43 (13.9)	46 (14.7)	43 (15.0)
<b>30 months</b>				
Height-for-age z-score	1025 (87.5)	-1.03 [0.9]	-1.17 [0.9]	-1.15 [0.9]
Weight-for-age z-score	1024 (87.4)	-0.56 [0.9]	-0.73 [0.9]	-0.65 [1.0]
Weight-for-height z-score	1024 (87.4)	-0.02 [0.9]	-0.16 [0.8]	-0.01 [0.9]
Wasting	1024 (87.4)	3 (0.9)	5 (1.4)	4 (1.2)
Underweight	1024 (87.4)	15 (4.4)	25 (7.0)	25 (7.6)
Stunted	1025 (87.5)	52 (15.3)	60 (16.9)	55 (16.7)
<b>36 months</b>				
Height-for-age z-score	1017 (86.8)	-1.04 [0.9]	-1.21 [0.84]	-1.19 [0.92]
Weight-for-age z-score	1017 (86.8)	-0.53 [0.9]	-0.71 [0.84]	-0.66 [0.95]
Weight-for-height z-score	1017 (86.8)	-0.05 [0.9]	-0.07 [0.82]	-0.01 [0.88]
Wasting	1017 (86.6)	1 (0.3)	5 (1.4)	4 (1.2)
Underweight	1017 (86.6)	17 (5.1)	22 (6.2)	23 (7.0)
Stunted	1017 (86.6)	55 (16.4)	60 (17.0)	58 (17.7)

\*Data are mean [SD] or number (%).  
IFA, iron-folic acid; MMN, multiple micronutrients.

changes during this period.<sup>14</sup> The lack of association between maternal ferritin at 32 weeks gestation and child growth at 36 months of age raises the possibility that robust in utero iron concentrations are most critical in

the early stages of pregnancy, for optimal postnatal child growth outcomes. Rapid fetal growth begins from 9 weeks after conception, and poor maternal nutritional status during the first trimester may have a significant impact

**Table 3** Descriptive statistics and analysis of child anthropometry at 36 months of age by treatment group, with unadjusted and adjusted models (n=1017)

Anthropometric index	Values at 36 months*	Unadjusted model effect † (95% CI)	Adjusted model effect †,‡, §(95% CI)
<b>Height (cm)</b>			
Daily IFA	91.5 [3.5]	Reference	Reference
Twice weekly IFA	90.9 [3.2]	-0.53§ (-1.05 to -0.01)	-0.55§ (-0.72 to -0.04)
Twice weekly MMN	90.9 [3.5]	-0.56§ (-1.10 to -0.02)	-0.59§ (-1.13 to -0.04)
<b>Weight (g)</b>			
Daily IFA	13.3 [1.7]	Reference	Reference
Twice-weekly IFA	12.9 [1.4]	-0.26§ (-0.52 to -0.01)	-0.24 (-0.49 to 0.01)
Twice-weekly MMN	13.1 [1.6]	-0.22 (-0.48 to 0.04)	-0.23 (-0.49 to 0.02)
<b>Height-for-age z-score</b>			
Daily IFA	-1.04 [0.9]	Reference	Reference
Twice-weekly IFA	-1.21 [0.8]	-0.16§ (-0.30 to -0.03)	-0.14§ (-0.28 to -0.01)
Twice-weekly MMN	-1.19 [0.9]	-0.15§ (-0.29 to -0.01)	-0.15§ (-0.29 to -0.01)
<b>Weight-for-height z-score</b>			
Daily IFA	0.04 [0.95]	Reference	Reference
Twice-weekly IFA	-0.07 [0.82]	-0.11 (-0.29 to 0.03)	-0.08 (-0.24 to 0.08)
Twice-weekly MMN	-0.01 [0.88]	-0.07 (-0.22 to 0.09)	-0.05 (-0.21 to 0.10)
<b>Weight-for-age z-score</b>			
Daily IFA	-0.53 [0.97]	Reference	Reference
Twice-weekly IFA	-0.71 [0.84]	-0.17§ (-0.32 to -0.02)	-0.13 (-0.28 to 0.02)
Twice-weekly MMN	-0.66 [0.95]	-0.13 (-0.29 to 0.03)	-0.12 (-0.27 to 0.04)
<b>Stunting</b>			
Daily IFA	55 (16.4)	Reference	Reference
Twice-weekly IFA	60 (17.0)	1.05 (0.69 to 1.59)	0.99 (0.66 to 1.51)
Twice-weekly MMN	58 (17.7)	1.10 (0.72 to 1.67)	1.07 (0.70 to 1.64)
<b>Underweight</b>			
Daily IFA	17 (5.1)	Reference	Reference
Twice-weekly IFA	22 (6.2)	1.25 (0.66 to 2.34)	1.18 (0.71 to 2.87)
Twice-weekly MMN	23 (7.0)	1.42 (0.76 to 2.62)	1.43 (0.71 to 2.89)

\*Data are mean [SD] or number (%).

†Effect is difference in means for height, weight, height-for-age z-score, weight-for-height-z score, weight-for-age z score and OR for stunting and underweight.

‡Adjusted for maternal age, parity, maternal education, maternal body mass index and clustering.

§p<0.05.

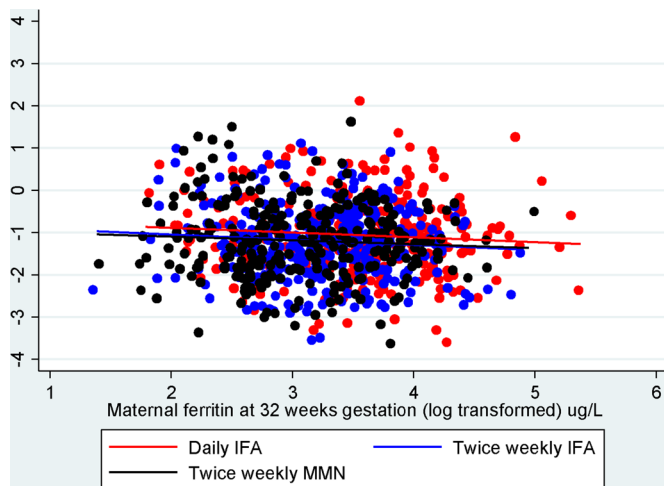
IFA, iron-folic acid; MMN, multiple micronutrients.

on placental function and consequently fetal growth.<sup>15</sup> We cannot rule out that children born to mothers who received daily antenatal IFA were different in other ways to those born to women receiving twice-weekly supplementation. However, this is unlikely as the study was randomised and extensive measurement of confounders was undertaken.

Eight other trials of antenatal/prenatal micronutrient supplementation have assessed growth in childhood;<sup>16–23</sup> however, findings are inconsistent and none of these studies assessed intermittent supplementation regimens, where the total dose of iron given during pregnancy is significantly lower than in daily regimens. Two of these

trials showed an improvement in growth outcomes in children born to mothers who took daily IFA compared with daily MMN or placebo. Khan *et al* found that MMN supplementation in pregnancy resulted in 5% more stunting than IFA alone during the first five years of life. HAZ were also lower in the MMN group compared with the IFA group; however, this did not reach significance.<sup>17</sup> Stewart *et al* found that children born to women who received daily IFA combined with zinc supplementation during pregnancy had greater postnatal linear growth (0.65 cm) at 7.5 years of age than control groups.<sup>19</sup> In contrast, Vadiya *et al* found that children born to women who took daily antenatal MMN had an increase of 204 g





**Figure 2** Scatter plot including linear fit showing relationship between maternal ferritin at 32 weeks gestation (log<sub>2</sub> (µg/L)) and child height-for-age z-scores at 36 months of age (n=1017). The slopes of the lines are close to zero with 95% CI. IFA, iron-folic acid; MMN, multiple micronutrients.

in weight and body size at 2.5 years of age compared with children born to women who received daily IFA.<sup>21</sup> The other five trials showed no sustained difference in growth outcomes in children receiving daily IFA, daily MMN or placebo (folic acid).<sup>16 18 20 22 23</sup>

In our original RCT, we observed a two point difference in mean cognitive composite scores at 6 months of age between infants born to women who received twice-weekly IFA group compared with those who received daily IFA. This difference was not sustained at 36 months of age and may have been transient, or due to difficulties

in cognitive testing of infants at 6 months of age. The finding that children born to women who received intermittent antenatal IFN or MMN supplementation had lower motor composite scores than those whose mothers received daily IFA may be explained by a higher iron concentration in utero in women who received daily IFA, associated with neurochemical changes related to the development of the motor system, such as improvement in neurotransmitters, dendritic branching, connections and myelination.<sup>24</sup>

Six other trials of antenatal/prenatal micronutrient supplementation have followed up cohorts into childhood to assess long-term developmental outcomes.<sup>23 25–29</sup> Our findings of an impact of antenatal IFA supplementation on child developmental outcomes support the results reported by Christian *et al*, who found that aspects of intellectual functioning (working memory, inhibitory control and fine motor functioning) among offspring aged 7–9 years in rural Nepal were positively associated with prenatal iron/folic acid supplementation.<sup>26</sup> The other studies have found no impact of antenatal/prenatal micronutrient supplementation on child developmental outcomes.<sup>23 25 27 28</sup> Several studies have shown that when pregnant women are undernourished or anaemic, provision of antenatal MMN supplements can improve the motor and cognitive abilities of their children up to 3.5 years later, particularly for both motor function and visual attention/spatial ability.<sup>27 28</sup> This is in contrast to our study in which no differential effects were observed in children born to undernourished women.

A systematic review and meta-analysis for long-term health benefits in children born to mothers who received

**Table 4** Descriptive statistics and analysis of child development at 36 months of age by treatment group, with an adjusted model for differences between group means (n=1017)

Developmental domain	Values* 6 months	Values* 36 months	Unadjusted model effect† (95% CI)	Adjusted model effect ‡,§ (95% CI)
<b>Cognitive</b>				
Daily IFA	100.2 [11.4]	96.3 [6.7]	Reference	Reference
Twice-weekly IFA	102.1 [10.9]	96.2 [4.8]	-0.15 (-1.16 to 0.86)	-0.19 (-1.20 to 0.82)
Twice-weekly MMN	100.9 [9.9]	96.1 [5.5]	-0.28 (-1.27 to 0.70)	-0.26 (-1.24 to 0.72)
<b>Language</b>				
Daily IFA	94.0 [8.0]	105.5 [9.2]	Reference	Reference
Twice-weekly IFA	94.8 [8.2]	104.2 [8.5]	-1.38 (-3.36 to 0.59)	-1.32 (-3.24 to 0.60)
Twice-weekly MMN	94.8 [7.7]	104.5 [8.2]	-1.04 (-2.76 to 0.68)	0.98 (-2.68 to 0.71)
<b>Motor</b>				
Daily IFA	112.3 [18.2]	110.8 [11.9]	Reference	Reference
Twice-weekly IFA	113.4 [18.9]	109.5 [10.6]	-1.33 (-3.56 to 0.90)	-1.44 (-3.65 to 0.77)
Twice-weekly MMN	112.5 [18.4]	108.9 [10.6]	-2.06 (-4.16 to 0.04)	-2.07§ (-4.11 to -0.03)

\*Data are mean [SD].

†Effect is difference in means.

‡Adjusted for maternal age, parity, maternal education, maternal body mass index and clustering.

§p<0.05.

IFA, iron-folic acid; MMN, multiple micronutrient.

**Table 5** Descriptive statistics and analysis of child laboratory outcomes at 36 months by treatment group, with adjusted and unadjusted models (n=1017)

Laboratory outcomes	Values 32 weeks gestation*	Values 36 months*	Unadjusted model effect† (95% CI)	Adjusted model effect†‡ (95% CI)
<b>Haemoglobin (g/dL)</b>				
Daily IFA	12.4 [1.2]	11.7 [0.9]	Reference	Reference
Twice-weekly IFA	12.4 [1.2]	11.7 [0.9]	0.05 (-0.10 to 0.19)	0.09 (-0.06 to 0.25)
Twice-weekly MMN	12.3 [1.2]	11.7 [1.0]	0.01 (-0.21 to 0.22)	0.01 (-0.20 to 0.22)
<b>Anaemia (Hb&lt;11.0 g/dL)</b>				
Daily IFA	35/344 (10.2)	58 (18.1)	Reference	Reference
Twice-weekly IFA	33/361 (9.1)	62 (18.5)	1.03 (0.69 to 1.53)	1.02 (0.67 to 1.56)
Twice-weekly MMN	42/318 (13.2)	60 (19.3)	1.08 (0.65 to 1.80)	1.08 (0.65 to 1.79)
<b>Ferritin (µg/L)‡</b>				
Daily IFA	32 {24 to 55}	35 {21 to 55}	Reference	Reference
Twice-weekly IFA	26 {18 to 37}	35 {21 to 52}	0.08 (-0.07 to 0.22)	0.07 (-0.08 to 0.22)
Twice-weekly MMN	21 {14 to 34}	35.5 {20 to 53.5}	0.01 (-0.15 to 0.18)	0.01 (-0.25 to 0.18)
<b>Iron deficiency (ferritin&lt;12 µg/L)</b>				
Daily IFA	3/342 (0.9)	12 (4.3)	Reference	Reference
Twice-weekly IFA	8/361 (2.2)	10 (3.4)	0.79 (0.31 to 2.04)	0.92 (0.35 to 2.40)
Twice-weekly MMN	19/315 (6.0)	15 (5.6)	1.31 (0.63 to 2.71)	1.49 (0.65 to 3.41)
<b>B12 (pmol/L)‡</b>				
Daily IFA	230.5 {184 to 279}	530 {405 to 678}	Reference	Reference
Twice-weekly IFA	229 {187 to 285}	512 {392 to 680}	-0.01 (-0.10 to 0.09)	-0.01 (-1.0 to 0.10)
Twice-weekly MMN	233 {187 to 287.5}	502 {405 to 650.5}	0.02 (-0.08 to 0.11)	0.02 (-0.07 to 0.11)

\*Data are mean [SD], number (%) or median {25th to 75 centile}.

†Effect is difference in means for haemoglobin, ferritin and B12 and OR for anaemia and iron deficiency.

‡Log base 2 transformed for statistical analysis.

§Adjusted for maternal age, parity, maternal education, maternal body mass index, maternal pathology at 32 weeks and clustering. IFA, iron-folic acid; MMN, multiple micronutrients.

daily MMN supplementation compared with daily IFA or placebo during pregnancy found no consistent differences in HAZ, weight-for-age z-scores or cognitive scores.<sup>30</sup>

The strengths of our study are the relatively small proportion of children lost to follow-up, the large sample size and comprehensive measurements (including micronutrient status) collected on all participants. Limitations include the lack of measurement of other markers of body composition in children such as skin fold thickness and mid-upper arm circumference, and no control group (with no iron supplements given) in the original trial. Several outcome measures were investigated; therefore, the association that we observed of lower composite motor scores in children born to women who received twice-weekly MMN compared with those who received daily IFA may be due to type I error. The mothers of the 154 (15%) children lost to follow-up were disproportionately more likely to come from a higher-educated, better-paying job, which may have introduced bias. Our findings are likely to be generalisable to other rapidly developing rural areas in Viet Nam, as well as low-income and middle-income countries undergoing economic transition.

## CONCLUSION

Low-dose iron supplementation given during pregnancy (120 mg per week) resulted in lower height and HAZ and motor composite scores in children at 36 months of age compared with high-dose antenatal iron supplementation (420 mg per week) in this semirural setting in Viet Nam. These findings support the importance of adequate iron stores during pregnancy, and the need for long-term follow-up studies of clinical outcomes in children born to mothers receiving lower doses of iron during the antenatal period.

### Author affiliations

<sup>1</sup>Department of Medicine, University of Melbourne, Peter Doherty Institute for Immunity and Infection, Parkville, Victoria, Australia

<sup>2</sup>Research and Training Centre for Community Development, Hanoi, Viet Nam

<sup>3</sup>Centre for Epidemiology and Biostatistics, Melbourne School of Population and Global Health, University of Melbourne, Melbourne, Victoria, Australia

<sup>4</sup>The Jean Hailes Research Unit, School of Public Health and Preventive Medicine, Monash University, Melbourne, Victoria, Australia

<sup>5</sup>Children's Hospital Oakland Research Institute, Oakland, California, USA

<sup>6</sup>The Victorian Infectious Diseases Service, Royal Melbourne Hospital, Parkville, Victoria, Australia

**Acknowledgements** The authors thank the participants and health workers in Hanam province, the Hanam Provincial Centre of Preventive Medicine, Ministry of Health, RTCCD; Alfred Pathology; BethHilton-Thorpe and Christalla Hajisava.

**Contributors** SH analysed the data, prepared the results and wrote the first and subsequent drafts of the manuscript. SH, B-AB, TTH and JF designed the study. SH, TTH and SB managed the data set and performed the statistical analysis. TTT, TDT, TTH, JAS and JK contributed to the study and survey design, reviewed and commented on the drafts of the report. TTH and TTT facilitated the conduct of the survey at the commune health stations. All authors approved the final submitted version of the manuscript. SH had full access to all the data in the study and assumes final responsibility for the decision to submit for publication.

**Funding** The original cluster randomised trial was funded through a grant from the National Health and Medical Research Council of Australia (grant number 628751).

**Disclaimer** The funders had no role in study design, data collection and analysis, decision to publish or preparation of the manuscript.

**Competing interests** SH is funded by an Australian National Health and Medical Research Council (NHMRC) Early Career Fellowship 1112581. JAS is funded by an Australian National Health and Medical Research Council (NHMRC) Senior Research Fellowship 1104975.

**Ethics approval** The Melbourne Health Human Research Ethics Committee and the Ha Nam Provincial Human Research Ethics Committee.

**Provenance and peer review** Not commissioned; externally peer reviewed.

**Data sharing statement** No additional data are available.

**Open Access** This is an Open Access article distributed in accordance with the Creative Commons Attribution Non Commercial (CC BY-NC 4.0) license, which permits others to distribute, remix, adapt, build upon this work non-commercially, and license their derivative works on different terms, provided the original work is properly cited and the use is non-commercial. See: <http://creativecommons.org/licenses/by-nc/4.0/>

© Article author(s) (or their employer(s) unless otherwise stated in the text of the article) 2017. All rights reserved. No commercial use is permitted unless otherwise expressly granted.

## REFERENCES

- Black MM. Micronutrient deficiencies and cognitive functioning. *J Nutr* 2003;133:3927s–31.
- Black RE, Allen LH, Bhutta ZA, et al. Maternal and child undernutrition: global and regional exposures and health consequences. *Lancet* 2008;371:243–60.
- Haider BA, Bhutta ZA. Multiple-micronutrient supplementation for women during pregnancy. *Cochrane Database Syst Rev* 2017;4:CD004905.
- World Health Organisation. Intermittent iron and folic acid supplementation during pregnancy. secondary intermittent iron and folic acid supplementation during pregnancy.. [http://www.who.int/elena/titles/intermittent\\_iron\\_pregnancy/en/](http://www.who.int/elena/titles/intermittent_iron_pregnancy/en/).
- World Health Organisation. WHO recommendations on antenatal care for a positive pregnancy experience. Organisation WH, ed. *Geneva: who*, 2016.
- Hanieh S, Ha TT, Simpson JA, et al. The effect of intermittent antenatal iron supplementation on maternal and infant outcomes in rural Viet Nam: a cluster randomised trial. *PLoS Med* 2013;10:e1001470.
- Pena-Rosas JP, De-Regil LM, Garcia-Casal MN, et al. Daily oral iron supplementation during pregnancy. *Cochrane Database Syst Rev* 2015;7:CD004736.
- Hanieh S, Ha TT, Simpson JA, et al. The effect of intermittent antenatal iron supplementation on maternal and infant outcomes in rural Viet Nam: a cluster randomised trial. *PLoS Med* 2013;10:e1001470.
- United Nations Children's Fund. A review of the nutrition situation in Vietnam 2009–2010. UNCS F, ed. *Ha Noi*, 2011.
- United Nations Children's Fund WHO, United Nations University. *Composition of a multi-micronutrient supplement to be used in pilot programmes among pregnant women in developing countries. report of a UNICEF/WHO/UNU Workshop*. New York: United Nations Children's Fund, 1999.
- World Health Organisation. *The WHO Child Growth Standards*. Geneva: World Health Organisation, 2006.
- World Health Organisation. WHO Anthro (version 3.2.2, January 2011) and macros. secondary WHO Anthro (version 3.2.2, January 2011) and macros. ;2011 <http://www.who.int/childgrowth/software/en/>.
- Scholl TO. Maternal iron status: relation to fetal growth, length of gestation, and iron endowment of the neonate. *Nutr Rev* 2011;69:S23–S29.
- Kitsiou-Tzeli S, Tzetzis M. Maternal epigenetics and fetal and neonatal growth. *Curr Opin Endocrinol Diabetes Obes* 2017;24:1.
- Belkacemi L, Nelson DM, Desai M, et al. Maternal undernutrition influences placental-fetal development. *Biol Reprod* 2010;83:325–31.
- Devakumar D, Chaube SS, Wells JC, et al. Effect of antenatal multiple micronutrient supplementation on anthropometry and blood pressure in mid-childhood in Nepal: follow-up of a double-blind randomised controlled trial. *Lancet Glob Health* 2014;2:e654–e663.
- Khan AI, Kabir I, Ekström EC, et al. Effects of prenatal food and micronutrient supplementation on child growth from birth to 54 months of age: a randomized trial in Bangladesh. *Nutr J* 2011;10:134.
- Zhou J, Zeng L, Dang S, et al. Maternal Prenatal Nutrition and Birth outcomes on malnutrition among 7- to 10-Year-Old children: a 10-Year Follow-Up. *J Pediatr* 2016;178:40–6.
- Stewart CP, Christian P, LeClerq SC, et al. Antenatal supplementation with folic acid + iron + zinc improves linear growth and reduces peripheral adiposity in school-age children in rural Nepal. *Am J Clin Nutr* 2009;90:132–40.
- Roberfroid D, Huybregts L, Lanou H, et al. Impact of prenatal multiple micronutrients on survival and growth during infancy: a randomized controlled trial. *Am J Clin Nutr* 2012;95:916–24.
- Vaidya A, Saville N, Shrestha BP, et al. Effects of antenatal multiple micronutrient supplementation on children's weight and size at 2 years of age in Nepal: follow-up of a double-blind randomised controlled trial. *Lancet* 2008;371:492–9.
- Wang W, Yan H, Zeng L, et al. No effect of maternal micronutrient supplementation on early childhood growth in rural western China: 30 month follow-up evaluation of a double blind, cluster randomized controlled trial. *Eur J Clin Nutr* 2012;66:261–8.
- Christian P, Kim J, Mehra S, et al. Effects of prenatal multiple micronutrient supplementation on growth and cognition through 2 y of age in rural Bangladesh: the JiVitA-3 trial. *Am J Clin Nutr* 2016;104:1175–82.
- Prado EL, Dewey KG. Nutrition and brain development in early life. *Nutr Rev* 2014;72:267–84.
- Li C, Zeng L, Wang D, et al. Prenatal Micronutrient Supplementation is not associated with Intellectual Development of Young School-Aged Children. *J Nutr* 2015;145:1844–9.
- Christian P, Murray-Kolb LE, Khatri SK, et al. Prenatal micronutrient supplementation and intellectual and motor function in early school-aged children in Nepal. *JAMA* 2010;304:2716–23.
- Prado EL, Alcock KJ, Muadz H, et al. Maternal multiple micronutrient supplements and child cognition: a randomized trial in Indonesia. *Pediatrics* 2012;130:e536–e546.
- Tofail F, Persson LA, El Arifeen S, et al. Effects of prenatal food and micronutrient supplementation on infant development: a randomized trial from the maternal and Infant Nutrition Interventions, Matlab (MINIMat) study. *Am J Clin Nutr* 2008;87:704–11.
- Li Q, Yan H, Zeng L, et al. Effects of maternal multimicronutrient supplementation on the mental development of infants in rural western China: follow-up evaluation of a double-blind, randomized, controlled trial. *Pediatrics* 2009;123:e685–e692.
- Devakumar D, Fall CH, Sachdev HS, et al. Maternal antenatal multiple micronutrient supplementation for long-term health benefits in children: a systematic review and meta-analysis. *BMC Med* 2016;14:90.