

# Combination of indoor residual spraying with long-lasting insecticide-treated nets for malaria control in Zambezia, Mozambique: a cluster randomised trial and cost-effectiveness study protocol

Carlos J Chaccour,<sup>1,2</sup> Sergi Alonso,<sup>1,2</sup> Rose Zulliger,<sup>3</sup> Joe Wagman,<sup>4</sup> Abuchahama Saifodine,<sup>5</sup> Baltazar Candrinho,<sup>6</sup> Eusébio Macete,<sup>2</sup> Joe Brew,<sup>1</sup> Christen Fornadel,<sup>7</sup> Hidayat Kassim,<sup>8</sup> Lourdes Loch,<sup>9</sup> Charfudin Sacoor,<sup>2</sup> Kenysson Varela,<sup>9</sup> Cara L Carty,<sup>4</sup> Molly Robertson,<sup>2,4</sup> Francisco Saute<sup>2</sup>

**To cite:** Chaccour CJ, Alonso S, Zulliger R, *et al.* Combination of indoor residual spraying with long-lasting insecticide-treated nets for malaria control in Zambezia, Mozambique: a cluster randomised trial and cost-effectiveness study protocol. *BMJ Glob Health* 2018;**3**:e000610. doi:10.1136/bmjgh-2017-000610

**Handling editor** Alberto L Garcia-Basteiro

CJC, SA, RZ, MR and FS contributed equally.

Received 17 October 2017  
Revised 14 December 2017  
Accepted 10 January 2018



For numbered affiliations see end of article.

**Correspondence to**  
Dr Carlos J Chaccour;  
carlos.chaccour@isglobal.org

## ABSTRACT

**Background** Most of the reduction in malaria prevalence seen in Africa since 2000 has been attributed to vector control interventions. Yet increases in the distribution and intensity of insecticide resistance and higher costs of newer insecticides pose a challenge to sustaining these gains. Thus, endemic countries face challenging decisions regarding the choice of vector control interventions.

**Methods** A cluster randomised trial is being carried out in Mopeia District in the Zambezia Province of Mozambique, where malaria prevalence in children under 5 is high (68% in 2015), despite continuous and campaign distribution of long-lasting insecticide-treated nets (LLINs). Study arm 1 will continue to use the standard, LLIN-based National Malaria Control Programme vector control strategy (LLINs only), while study arm 2 will receive indoor residual spraying (IRS) once a year for 2 years with a microencapsulated formulation of pirimiphos-methyl (Actellic 300 CS), in addition to the standard LLIN strategy (LLINs+IRS). Prior to the 2016 IRS implementation (the first of two IRS campaigns in this study), 146 clusters were defined and stratified per number of households. Clusters were then randomised 1:1 into the two study arms. The public health impact and cost-effectiveness of IRS intervention will be evaluated over 2 years using multiple methods: (1) monthly active malaria case detection in a cohort of 1548 total children aged 6–59 months; (2) enhanced passive surveillance at health facilities and with community health workers; (3) annual cross-sectional surveys; and (4) entomological surveillance. Prospective microcosting of the intervention and provider and societal costs will be conducted. Insecticide resistance status pattern and changes in local Anopheline populations will be included as important supportive outcomes.

**Discussion** By evaluating the public health impact and cost-effectiveness of IRS with a non-pyrethroid insecticide in a high-transmission setting with high LLIN ownership, it is expected that this study will provide programmatic and

## Key questions

### What is already known about this topic?

- ▶ There is conflicting evidence on the public health impact and cost-effectiveness of combining long-lasting insecticide-treated nets (LLINs) and indoor residual spraying (IRS) for malaria control, and little information on the impact on insecticide resistance, particularly with novel IRS active ingredients.

### What are the new findings?

- ▶ This trial randomly assigned 43 of 86 clusters to receive IRS with Actellic 300 CS in an area with high and ongoing LLIN coverage.
- ▶ Epidemiological impact is assessed through active case detection in a cohort of children under 5 residing in the core area of each cluster and through enhanced passive surveillance at each health facility in the district.
- ▶ Economic outcome is marginal cost per a malaria case averted through IRS with Actellic on top of LLINs in a highly endemic area, as compared with LLINs alone.

policy-relevant data to guide national and global vector control strategies.

**Trial registration number** NCT02910934.

## BACKGROUND

Around 80% (73%–88%) of the total reduction in malaria prevalence seen in Africa since 2000 is attributed to vector control interventions.<sup>1</sup> However, increases in the distribution and intensity of insecticide resistance, particularly resistance to pyrethroids, in key vector populations pose a formidable

**Table 1** Cluster randomised trials assessing the combination of IRS and LLIN with results available to date

Reference	Country	Transmission intensity	Primary outcome	IRS product	Result	Comment
Corbel <i>et al</i> <sup>5</sup>	Benin	Moderate	Incidence by active case detection	Carbamate	No benefit	Carbamate applied every 8 months, not fully covering transmission season
Pinder <i>et al</i> <sup>6</sup>	Gambia	Moderate	Incidence by passive case detection	Organochloride	No benefit	Reported LLIN usage >95%
Kafy <sup>8</sup>	Sudan	Low	Incidence by active case detection	Carbamate or pyrethroid	Significant protection with carbamate No benefit from deltamethrin (unpublished)	Carbamate IRS in addition to LLINs appeared to slow the emergence of pyrethroid resistance relative to LLINs only. <sup>38</sup>
West <i>et al</i> <sup>7</sup>	Tanzania	High	Prevalence	Carbamate	Significant added protection	Evaluated the incremental effect of two rounds of bendiocarb in Tanzania and found significant added protection, even across a wide range of net usage <sup>39</sup>
Hamaiza <i>et al</i> <sup>40</sup>	Zambia	High	RDT positivity rate (community level)	Pyrethroid (two different) or organophosphate (two formulations)	Significant added benefit (shorter duration for pyrethroids)	Found benefit in the combination, even when the insecticide used for IRS was a pyrethroid

IRS, indoor residual spraying; LLIN, long-lasting insecticide-treated nets; RDT, rapid diagnostic test.

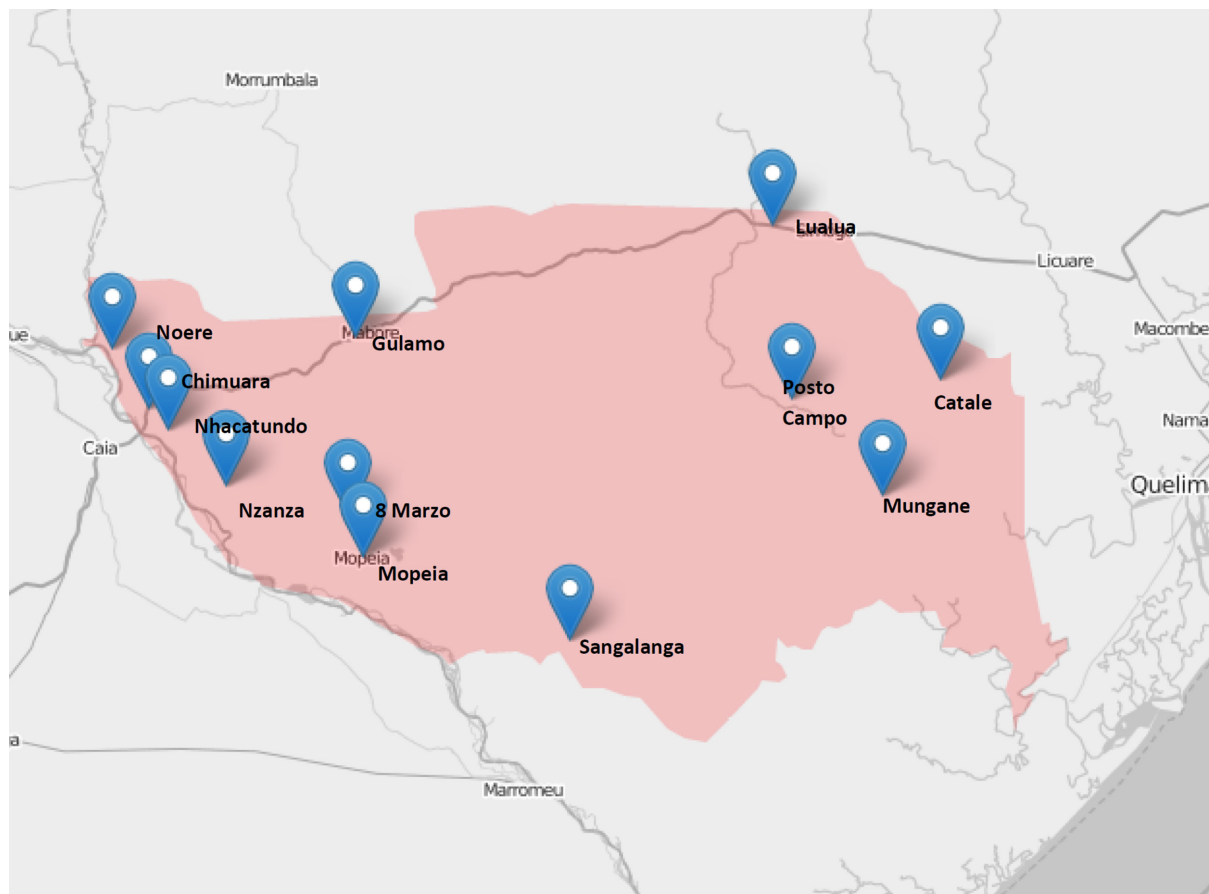
challenge to sustaining these hard-won gains.<sup>2,3</sup> In this context, malaria endemic countries face challenging decisions regarding the choice and financing of vector control interventions. Country-level decision-makers and development partners increasingly look for evidence of public health impact and cost-effectiveness of different interventions to guide investments.

The WHO recommends that endemic countries protect all those at risk of malaria with long-lasting insecticide-treated nets (LLINs) or, where appropriate, indoor residual spraying (IRS).<sup>4</sup> The WHO guidance on combining IRS and LLINs states that deploying IRS with a non-pyrethroid insecticide in an area with known insecticide resistance should be done only as part of an insecticide resistance management strategy.<sup>4</sup> This guidance is largely based on data available in March 2014 from cluster randomised trials<sup>5-8</sup> (see [table 1](#) for all cluster randomised trials available to date). These studies, conducted in different transmission settings, gave inconsistent evidence and did not directly assess the cost or cost-effectiveness of the interventions. These findings highlight the question of whether or not the impact of IRS in addition to LLINs is related to transmission intensity.

Studies with alternative designs suggest but fail to clearly demonstrate an incremental benefit in the combined use of IRS and LLINs. Hamel *et al*<sup>9</sup> conducted a non-randomised prospective trial in a high-transmission area in Kenya using pyrethroids for IRS. This study found a marked decrease in malaria incidence in the IRS and LLIN arms. Experimental hut trials have also given inconsistent results: in Tanzania two studies using different net brands and IRS products found little benefit of adding IRS once good LLIN coverage was achieved.<sup>10,11</sup> In Benin, however, Ngufor *et al*,<sup>12</sup> using a similar design, showed that IRS with a non-pyrethroid provided additional levels of transmission control and personal protection against pyrethroid-resistant mosquitoes. A trial is currently ongoing in Ethiopia assessing IRS with carbamate in addition to LLINs in an area of seasonal transmission and relatively low prevalence.<sup>13</sup>

Additionally, a meta-analysis including data from 17 countries found the IRS-LLINs combination beneficial in terms of reducing parasitaemia in areas of medium or high transmission across sub-Saharan Africa.<sup>14</sup>

This study in Mozambique will provide detailed information on the impact (infection burden and insecticide resistance) and cost-effectiveness of adding IRS with an extended release formulation of the organophosphate insecticide pirimiphos-methyl (Actellic 300 CS, Syngenta AG, Basel, Switzerland) in a high-transmission area with high LLIN access before and after an LLIN campaign. This information will be disseminated to the Programa Nacional de Controlo da Malaria (NMCP) as well as to local and international stakeholders and decision makers to inform policy recommendations and choices regarding the combination of vector control strategies.



**Figure 1** Administrative map of Mopeia.

### Primary research question

In an area with high malaria endemicity and high LLIN access, what is the incremental benefit of IRS on malaria incidence and at what level of cost-effectiveness?

## METHODS

### Study setting

Mopeia is a district in Zambezia, one of the most impoverished provinces in Mozambique (figure 1). The projected population for 2016 was 162 188 individuals, with 31 927 (19.7%) under 5 years of age.<sup>15</sup>

The malaria burden is high in Zambezia, with a parasite prevalence of 68% in children under 5 in 2015.<sup>16</sup> The parasite prevalence in children 1–15 years of age in Mopeia was 47.8% (38.7%–57.1%) in 2006–2008.<sup>17</sup> Mopeia received 175 297 LLINs through a mass campaign in 2013 and IRS in the entire district with pyrethroids in 2014.<sup>18</sup> Pregnant women in Mopeia receive free LLINs at their first antenatal care appointment, as per national policy. All residents are targeted to receive new LLINs in mid-2017 as part of Mozambique's national LLIN universal coverage campaign. Additional malaria control activities in the district include access to intermittent prevention of malaria in pregnancy, efforts to expand appropriate case management and behaviour change communication.<sup>19</sup>

The primary malaria vector species in Mopeia District are *Anopheles gambiae* s.s. and *A. funestus* s.s., although *A. arabiensis* is present as well. Data from January 2015 in the neighbouring districts of Mocuba and Morrumbala show pyrethroid resistance (52% and 34% mortality 24 hours after deltamethrin WHO tube test, and 40% and 33% mortality after lambda-cyhalothrin, respectively) in the local *A. gambiae* s.l. population.<sup>20</sup>

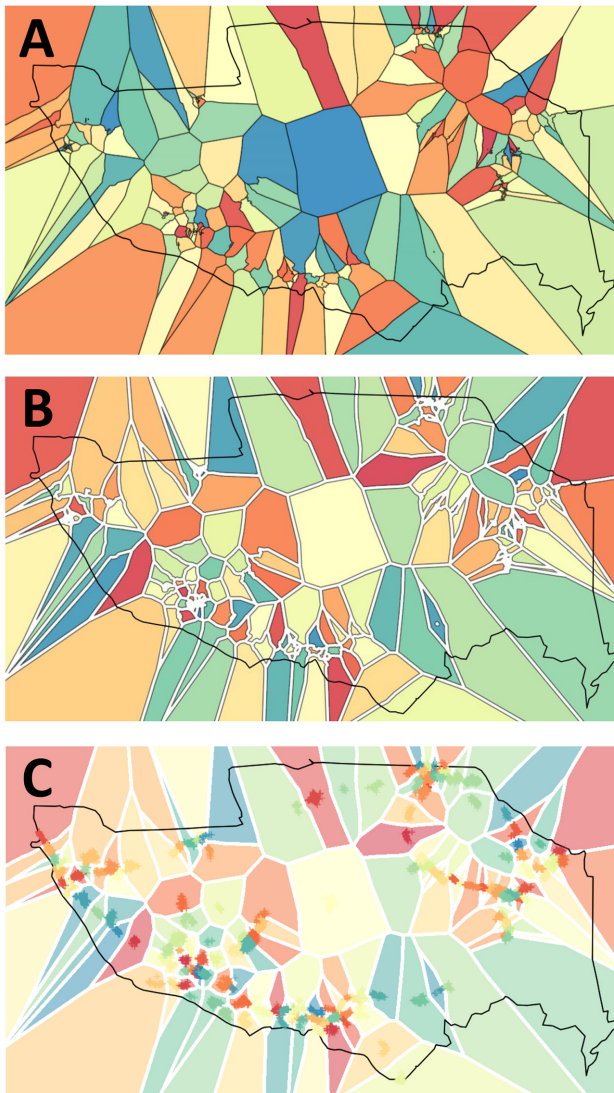
### Study overview

The study is a cluster randomised trial in which all of Mopeia's villages will continue to receive LLINs through mass campaigns and routine distribution, and half of the villages will be randomised to receive additional IRS with Actellic 300 CS.

### Cluster assignment and buffering

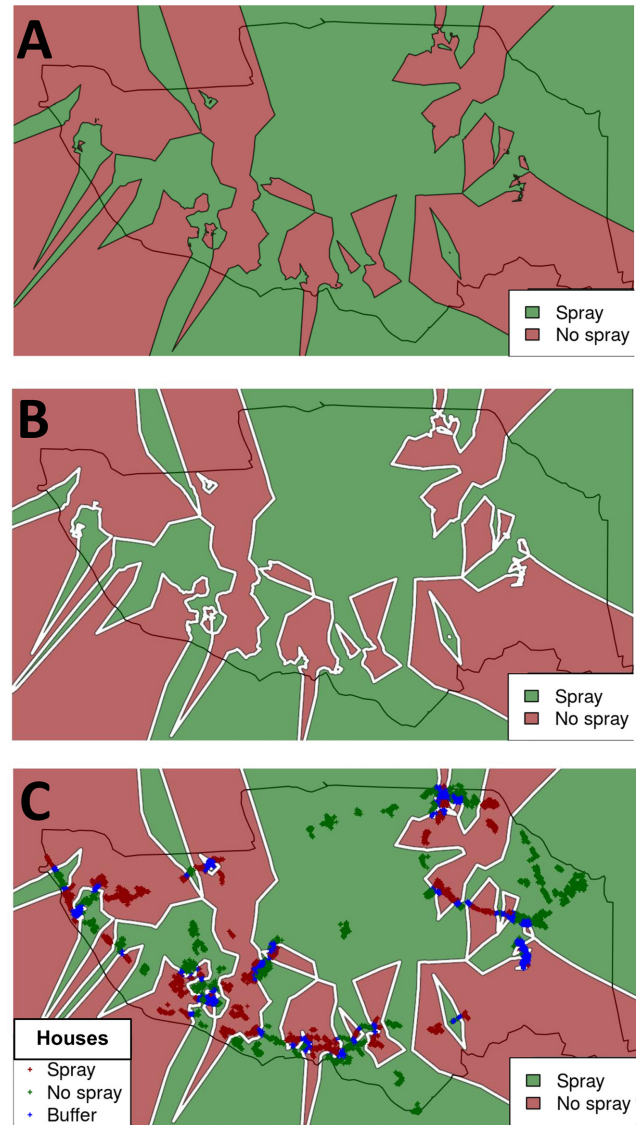
Households and population including number of children under 5 years of age were enumerated in June–July 2016. This information was used to stratify their villages in three groups by population size. Intervention allocation was conducted during a 'randomization ceremony' in which village representative blindly drew spray/no-spray lots from three boxes containing the stratified village names.

A 'fried egg' design was chosen for the clusters.<sup>21</sup> To avoid contamination between clusters with discordant



**Figure 2** Defining cluster limits and buffers. Voronoi tessellation for cluster definition (panel A). Panel B shows the Voronoi surface with internal buffers. Panel C shows the location of every village, as well as the core and buffer areas.

spray status, a buffer zone of at least 1km was defined around each core area. This was based on typical African vector flying and recapture ranges<sup>22 23</sup> and previous similar trials.<sup>5-7</sup> This resulted in at least 2km separating children in discordant spray areas. Villages assigned to the same intervention status were classified as single village clusters or grouped into larger clusters when required by size. Many households were located within 1km of the village limit but more than 2km away from any other village. Excluding these households due to location would result in great loss of recruitment opportunities, so we constructed Delaunay triangles and subsequently create Voronoi polygons from all households' location. Voronoi tessellation was used to 'expand' each village's boundary so that it encompasses those points in which the villagers live and any point which is closer to that village than any other. This process classified every point of Mopeia as belonging to the village closest to it (figure 2). Buffers were then defined from these expanded



**Figure 3** Merging clusters with same status and buffering between clusters. Panel A shows the spray and no-spray regions. Panel B shows the 1-km of internal buffer added to each spray status zone. In panel C, each household was added and colour-coded according to location regarding spray and buffer status.

borders. Buffering between clusters with the same intervention status was deemed unnecessary and could have limited the number of eligible participants. In order to reduce contamination, an internal buffer zone of at least 1km was defined around each cluster's core area, and cohort members will be selected only from core areas. Each household was added and colour-coded according to location regarding spray and buffer status (figure 3).

**Intervention**

The villages selected to receive the IRS intervention in 2016 will receive IRS with Actellic 300 CS once a year for 2years according to President's Malaria Initiative (PMI) Africa Indoor Residual Spraying (PMI/AIRS) standard operating procedures,<sup>24</sup> in addition to standard LLIN distribution at both Antenatal Clinics (ANC) and through

a 2017 mass distribution campaign. Villages selected to not receive the IRS intervention will maintain standard of care with LLINs, but will not receive IRS.

In October–November 2017 (prior to study year 2), IRS will be repeated in the same villages using the same insecticide product. Additionally, in April–July 2017 the whole district was targeted to receive LLINs from the NMCP. Information about implementation of interventions will be obtained with questionnaires during the monthly active cohort visits and during the cross-sectional surveys, including questions about wall replastering/painting and net usage. Information on quality and duration of IRS effect will be obtained through cone bioassays.

The standard of malaria care at community and health centre will remain unchanged throughout the study area, and stock levels of malaria commodities will be ensured by study partners.

### Study outcomes

#### Primary outcomes

1. malaria cases averted in children 6–59 months of age at the community level by adding IRS (community incidence); the study is powered based on this outcome
2. cost per malaria case averted in children 6–59 months of age at the community level by adding IRS
3. malaria case averted in children 6–59 months of age at the health facility level by adding IRS (health facility incidence)
4. cost per malaria case averted in children 6–59 months of age at the health facility level by adding IRS.

#### Secondary outcomes

1. vector densities, human biting rates, sporozoite rates, indoor and outdoor feeding behaviours, prevalence and intensity of resistance to pyrethroids, and estimates of entomological inoculation rates (EIR) as measured or estimated through entomological surveillance
2. changes in community-based parasite prevalence
3. incremental impact of combining IRS with LLINs, including assessment of the impact of new nets in year 2
4. correlation between incidence at community and health facility levels
5. correlation between incidence (community and health facility) and prevalence
6. changes in malaria prevention methods including net use and in health-seeking behaviour.

### Measurement of epidemiological impact

To determine the malaria incidence based on active case detection, a cohort of 1548, 774 children per arm, will be followed by monthly household visits. The target is to recruit 18 children from each cluster who are 6–59 months of age at time of enumeration (43 clusters per arm). During each household visit, a short questionnaire will be administered to the caretaker and a rapid diagnostic test (RDT) will be performed on the cohort child. If the

child has a positive RDT, he or she will receive treatment according to the national guidelines; hence, any child who is RDT-positive at baseline will be cleared of parasitaemia for follow-up. Every time a child is treated, 10 days will be subtracted from his or her at-risk time given the half-life of artemether/lumefantrine.<sup>25</sup>

To estimate incidence rates via passive surveillance at the health facility level, a facility-based team will ensure the collection of the household location and RDT test result for each febrile patient who presents to a health facility. Enhanced passive surveillance will also include abstraction of RDT test results and treatment information from community health workers.

Cross-sectional studies will be carried out in April to May, at the peak of transmission season in 2017 and 2018, to estimate malaria infection prevalence and obtain additional costing and healthcare expenditure data. Figure 4 shows the Standard Protocol Items: Recommendations for Interventional Trials diagram for this study protocol.

### Measurement of costing outcomes

Costing data will be prospectively collected using data collection tools to determine the cost of IRS and of a case of malaria from the societal perspective.

IRS implementation costs will be recorded following an ingredient approach or microcosting<sup>26</sup>: each quantity of resource used for the programme will be multiplied by its corresponding unit cost or price. Expenditures will be inflation-adjusted and converted to US dollars, according to the official exchange rate.<sup>27</sup>

Implementation costs will be classified as financial resources needed to carry out IRS implementation,<sup>28</sup> and economic opportunity costs, which include resources used in IRS implementation that do not necessarily involve a payment for the project but represent an opportunity cost for the society (such as car used in the IRS implementation that was not purchased and so on).

Health system costs will be obtained at the health facilities using a mixed approach: bottom-up for most of the resources used during the hospital visit or admission (tests and treatments, including the time spent by the health worker, lab and pharmacy technician) and top-down for overhead costs, in which annual operating costs of the health services will be allocated according to the proportion of the total number of services provided due to malaria in relation to all services. These IRS implementation and health service costs will be used to determine the cost from the payer's perspective.

The societal perspective will include the aforementioned costs along with those incurred by households and individuals. Household direct costs will consist of medical and non-medical care, transportation, and others (food, telephone and others). Household indirect costs will consist of the monetisation of caregiver's time lost (according to Mozambican minimum wage reports<sup>29 30</sup>). These costs will be collected through the cross-sectional and active case detection questionnaires.



60 months and over, and estimated point prevalence of 54% and 50%, respectively.

### Allocation concealment and blinding

The nature of the implementation in villages makes blinding to spray status impossible to the teams collecting incidence data at the community level. Acknowledging this as an inherent limitation, IRS implementation is not concealed, yet workers doing the active case detection will not be directly informed about the spray status of the clusters they visit.

Analysis will be performed by a statistician blinded to the spray status of the clusters.

### Statistical methods

Primary analysis will be conducted based on intention to treat. Analysis of incidence data will be independent and based on cluster IRS allocation, regardless of household refusal/acceptance of spray. To address the primary outcome, incidence between spray and no-spray clusters will be compared with a negative binomial regression model using generalised estimating equations that take into account the cluster design effect. Additional per-protocol analysis will be adjusted by net usage, net integrity and washes, as well as ecological, sociological and economic variables in the active cohort.

The cost-effectiveness ratios associated with IRS implementation will be expressed as cost per (1) episodes or (2) deaths averted. Following a societal perspective, the incremental cost-effectiveness ratios (ICERs) can be expressed as the following:

$$ICER = \frac{[Costs\ IRS\ (Actellic) - Savings\ IRS\ (Actellic)] - [Costs\ nonIRS - Savings\ nonIRS]}{Malaria\ cases\ or\ deaths\ IRS\ (Actellic) - Malaria\ cases\ or\ deaths\ nonIRS}$$

$$= \frac{Costs\ associated\ with\ IRS\ (Actellic) - Society\ savings}{Cases\ or\ Deaths\ averted\ clinical\ malaria}$$

The threshold level of the ICERs used to define the implementation of IRS as cost-effective will be standard levels defined by the World Bank and by the WHO.<sup>34 35</sup> ICERs will also be compared with other malaria interventions in the existing literature.<sup>36 37</sup>

To allow for uncertainty, all model parameters will be included as probability distributions rather than as point estimates, and probabilistic sensitivity analysis will be subsequently undertaken. Kullback-Laibler test for divergence between distribution will be used to fit parameter distribution obtained through data collected in the study. For those input parameters where no data are available, ranges will be derived from published literature. Monte-Carlo simulations of the probabilistic sensitivity analysis will be used to compute ICER SE and the corresponding CI.

## DISCUSSION

This study aims at providing Ministries of Health and funding partners with additional evidence regarding the public health impact and cost-effectiveness of combining the most effective vector control tools currently available, LLINs and IRS.

Some of the limitations of this study include the lack of a clear epidemiological characterisation at baseline and the

2-year follow-up period that involves practicalities regarding sample size and potential loss to follow up (LTFU) (see below).

Despite these limitations, this study has many strengths that will generate critical information on the cost-effectiveness and entomological impact of using a next-generation IRS product in a context with very high malaria transmission, existent pyrethroid resistance and high coverage of LLINs. These include random allocation of IRS to clearly defined clusters with ample buffer zones, which should contribute to the reliability of the results. The population was closely involved in cluster allocation and has responded well during pre-enrolment community mobilisation.

This study also includes rigorous, multiple methods for determining intervention impact using both active and passive surveillance, entomological data and cross-sectional surveys. Sample size calculations took into account potential LTFU in every cluster and potential loss of up to two full clusters. Lastly, this study will prospectively cost both IRS implementation and the payer and societal cost of malaria in order to determine the cost-effectiveness of the intervention. These data are expected to provide much-needed information to guide future vector control decisions in Mozambique and in similar settings.

### Author affiliations

<sup>1</sup>ISGlobal, Hospital Clínic - Universitat de Barcelona, Barcelona, Spain

<sup>2</sup>Centro de Investigação em Saúde de Manhiça, Maputo, Mozambique

<sup>3</sup>President's Malaria Initiative and Malaria Branch, US Centers for Disease Control and Prevention, Maputo, Mozambique

<sup>4</sup>PATH, Washington DC, USA

<sup>5</sup>President's Malaria Initiative, US Agency for International Development, Maputo, Mozambique

<sup>6</sup>Programa Nacional de Controlo da Malaria (NMCP), Maputo, Mozambique

<sup>7</sup>President's Malaria Initiative, US Agency for International Development, Washington DC, USA

<sup>8</sup>Direcção Provincial de Saúde Zambézia, Quelimane, Mozambique

<sup>9</sup>Abt Associates, PMI-AIRS Mozambique, Maputo, Mozambique

**Contributors** BC, RZ, AS, MR, CLC, JW and FS conceived the study. CJC, CLC, MR, JW and JB planned the cluster design and calculated the sample size. CJC, SA, JW, RZ, KV, MR and FS wrote the first draft of the protocol. CJC, SA, JW, RZ, MR and FS wrote the data collection and informed consent forms. BC, EM and HK contributed to study design and assessed emerging issues during planning and initial implementation. SA planned and wrote the costing methods. CS designed and implemented the census. KV, LL and CF planned and wrote the entomological methods and are responsible for entomological data collection. JB delineated and randomised the clusters and produced the maps and implementation lists. All authors contributed to, read and approved the final manuscript.

**Funding** Funding for this study was provided by PATH, through a grant from UNITAID primed by the Innovative Vector Control Consortium (IVCC), and by USAID through the US President's Malaria Initiative. CJC is supported by a Ramón Areces Fellowship. JB is supported by an Erasmus Mundus Joint Doctorate Fellowship, Specific Grant Agreement 2016-1346. The findings and conclusions in this report are those of the authors and do not necessarily represent the official position of the Centers for Disease Control and Prevention.

**Competing interests** None declared.

**Patient consent** Obtained.

**Ethics approval** This protocol has been approved by the Institutional Review Board of the CISM (CIBS-CISM), the National Bioethical Committee (Comité Nacional de bioética para a Saúde de Moçambique (CNBS), the PMI Operational Research Committee and PATH's Research Ethics Committee (REC). This study was reviewed by the Centers for Disease Control and Prevention (CDC) and determined to be human subjects research with non-engagement by CDC staff.

**Provenance and peer review** Not commissioned; externally peer reviewed.

**Data sharing statement** The full protocol is available from the corresponding author upon reasonable request.

**Open Access** This is an Open Access article distributed in accordance with the Creative Commons Attribution Non Commercial (CC BY-NC 4.0) license, which permits others to distribute, remix, adapt, build upon this work non-commercially, and license their derivative works on different terms, provided the original work is properly cited and the use is non-commercial. See: <http://creativecommons.org/licenses/by-nc/4.0/>

**Author note** Some members of the sponsor institutions participated in study design (MR, JW, RZ, AS, CLC and CF). The primary data collection, management and analysis remain the responsibility of the CISM, with other investigators contributing to secondary analysis, in coordination with CISM. Writing of the report will be a joint effort of the participating institutions.

© Article author(s) (or their employer(s) unless otherwise stated in the text of the article) 2018. All rights reserved. No commercial use is permitted unless otherwise expressly granted.

## REFERENCES

- Bhatt S, Weiss DJ, Cameron E, *et al*. The effect of malaria control on *Plasmodium falciparum* in Africa between 2000 and 2015. *Nature* 2015;526:207–11.
- Mnzava AP, Knox TB, Temu EA, *et al*. Implementation of the global plan for insecticide resistance management in malaria vectors: progress, challenges and the way forward. *Malar J* 2015;14:173.
- WHO. *Global plan for insecticide resistance management in malaria vectors (GPIRM)*. Geneva: World Health Organization, 2012.
- WHO. WHO guidance for countries on combining indoor residual spraying and long-lasting insecticidal nets. 2014. [http://www.who.int/malaria/publications/atoz/who-guidance-combining-irs\\_llins-mar2014.pdf](http://www.who.int/malaria/publications/atoz/who-guidance-combining-irs_llins-mar2014.pdf).
- Corbel V, Akogbeto M, Damien GB, *et al*. Combination of malaria vector control interventions in pyrethroid resistance area in Benin: a cluster randomised controlled trial. *Lancet Infect Dis* 2012;12:617–26.
- Pinder M, Jawara M, Jarju LB, *et al*. Efficacy of indoor residual spraying with dichlorodiphenyltrichloroethane against malaria in Gambian communities with high usage of long-lasting insecticidal mosquito nets: a cluster-randomised controlled trial. *Lancet* 2015;385:1436–46.
- West PA, Protopopoff N, Wright A, *et al*. Indoor residual spraying in combination with insecticide-treated nets compared to insecticide-treated nets alone for protection against malaria: a cluster randomised trial in Tanzania. *PLoS Med* 2014;11:e1001630.
- Kafy H. Combination of IRS with LLINs versus LLINs alone in Sudan: results of a very large randomised trial [abstract]; 6th MIM Pan-African Malaria Conference; 6–11 October 2013, Durban, South Africa. 2013.
- Hamel MJ, Otieno P, Bayoh N, *et al*. The combination of indoor residual spraying and insecticide-treated nets provides added protection against malaria compared with insecticide-treated nets alone. *Am J Trop Med Hyg* 2011;85:1080–6.
- Okumu FO, Mbeyela E, Lingamba G, *et al*. Comparative field evaluation of combinations of long-lasting insecticide treated nets and indoor residual spraying, relative to either method alone, for malaria prevention in an area where the main vector is *Anopheles arabiensis*. *Parasit Vectors* 2013;6:46.
- Okumu FO, Chipwaza B, Madumla EP, *et al*. Implications of bio-efficacy and persistence of insecticides when indoor residual spraying and long-lasting insecticide nets are combined for malaria prevention. *Malar J* 2012;11:378.
- Ngufor C, N'Guessan R, Boko P, *et al*. Combining indoor residual spraying with chlorfenapyr and long-lasting insecticidal bed nets for improved control of pyrethroid-resistant *Anopheles gambiae*: an experimental hut trial in Benin. *Malar J* 2011;10:343.
- Deressa W, Loha E, Balkew M, *et al*. Combining long-lasting insecticidal nets and indoor residual spraying for malaria prevention in Ethiopia: study protocol for a cluster randomized controlled trial. *Trials* 2016;17:20.
- Fullman N, Burstein R, Lim SS, *et al*. Nets, spray or both? The effectiveness of insecticide-treated nets and indoor residual spraying in reducing malaria morbidity and child mortality in sub-Saharan Africa. *Malar J* 2013;12:62.
- Instituto\_Nacional\_de\_Estatística\_Mozambique. *Estatística do Distrito de Mopeia*. <http://www.ine.gov.mz/estatisticas/estatisticas-territoriais-districtais/zambezia/novembro-de-2013> (Nov 2013).
- Ministério da Saúde (MISAU), Instituto Nacional de Estatística (INE). *Inquérito de Indicadores de Imunização, Malária e HIV/SIDA em Moçambique (IMASIDA)*. 2015.
- Temu EA, Coleman M, Abilio AP, *et al*. High prevalence of malaria in Zambezia, Mozambique: the protective effect of IRS versus increased risks due to pig-keeping and house construction. *PLoS One* 2012;7:e31409.
- The PMI Africa Indoor Residual Spraying (AIRS) Project. Semi-annual report: October 1, 2014 – March 31, 2015*. Bethesda, MD: The PMI AIRS Project, Abt Associates Inc.
- Ministerio de Saude de Moçambique. *Programa Nacional de Controlo da Malária. Relatório anual*. 2015.
- PMI|Africa IRS (AIRS) Project. *AIRS Mozambique susceptibility testing report, September 2015*. Bethesda, MD: PMI|Africa IRS (AIRS) Project Indoor Residual Spraying (IRS 2) Task Order Four, Abt Associates Inc.
- Delrieu I, Leboulleux D, Ivinson K, *et al*. Design of a Phase III cluster randomized trial to assess the efficacy and safety of a malaria transmission blocking vaccine. *Vaccine* 2015;33:1518–26.
- Jb. S. *Measuring adult dispersal*. In: Silver JBe, ed. *IMosquito ecology: field sampling methods*. Dordrecht, Netherlands: Springer, 2008:1377–424.
- Thomas CJ, Cross DE, Bøgh C. Landscape movements of *Anopheles gambiae* malaria vector mosquitoes in rural Gambia. *PLoS One* 2013;8:e68679.
- Burnett J, Chandonait P, Were A, Schiavone E, *Supervisory toolkit for better indoor residual spraying*. Bethesda, MD: Africa Indoor Residual Spraying Project, President's Malaria Initiative, 2013.
- Ezzet F, van Vugt M, Nosten F, *et al*. Pharmacokinetics and pharmacodynamics of lumefantrine (benflumetol) in acute falciparum malaria. *Antimicrob Agents Chemother* 2000;44:697–704.
- Johns B, Baltussen R, Hutubessy R. Programme costs in the economic evaluation of health interventions. *Cost Eff Resour Alloc* 2003;1:1.
- WHO. Guidelines for cost-effectiveness analysis of vector control. [http://www.who.int/malaria/publications/atoz/who\\_cds\\_93\\_4/en/](http://www.who.int/malaria/publications/atoz/who_cds_93_4/en/) (accessed Aug 2015).
- White MT, Conteh L, Cibulskis R, *et al*. Costs and cost-effectiveness of malaria control interventions—a systematic review. *Malar J* 2011;10:337.
- Jones J, Tarp F. Jobs and welfare in Mozambique. *World Institute for Development Economic Research (UNU-WIDER) Working Paper Series 2013(UNU-WIDER Research Paper WP2013/045)*.
- wageindicator.org. Minimum Wages in Mozambique with effect from 01-04-2017 to 31-03-2018. <http://www.wageindicator.org/main/salary/minimum-wage/mozambique>.
- Drakeley C, Schellenberg D, Kihonda J, *et al*. An estimation of the entomological inoculation rate for Ifakara: a semi-urban area in a region of intense malaria transmission in Tanzania. *Trop Med Int Health* 2003;8:767–74.
- Abt PMI AIRS. Entomology Technical brief. <https://issuu.com/africairs/docs/entomology> (accessed January 2018).
- Hayes RJ, Bennett S. Simple sample size calculation for cluster-randomized trials. *Int J Epidemiol* 1999;28:319–26.
- Cost effectiveness and strategic planning (WHO-CHOICE)*. *AFR D: cost effectiveness results for malaria*. Geneva: World Health Organization, 2014. [http://www.who.int/choice/results/mal\\_afrd/en/](http://www.who.int/choice/results/mal_afrd/en/)
- World Bank 1993. Bank W, ed. *World development report 1993: investing in health*. New York, 1993.
- Shillcutt SD, Walker DG, Goodman CA, *et al*. Cost effectiveness in low- and middle-income countries: a review of the debates surrounding decision rules. *Pharmacoeconomics* 2009;27:903–17.
- Woods B, Revill P, Sculpher M, *et al*. Country-level cost-effectiveness thresholds: initial estimates and the need for further research. *Value Health* 2016;19:929–35.
- WHO Malaria Policy Advisory Committee (MPAC) meeting report. 2016 <http://www.who.int/malaria/publications/atoz/mpac-report-september-2016/en/> (accessed Feb 2017).
- West PA, Protopopoff N, Wright A, *et al*. Enhanced protection against malaria by indoor residual spraying in addition to insecticide treated nets: is it dependent on transmission intensity or net usage? *PLoS One* 2015;10:e0115661.
- Hamaiza B, Sikaala CH, Moonga HB, *et al*. Incremental impact upon malaria transmission of supplementing pyrethroid-impregnated long-lasting insecticidal nets with indoor residual spraying using pyrethroids or the organophosphate, pirimiphos methyl. *Malar J* 2016;15:100.